



- Designed for drying and curing of soft gels and capsules
- Drop ends and/or sides for quicker drying
- Conforms to FDA Regulation Title 21 CFR 177.2420
- Interlock stacking increases drying room efficiency
- Temperature range continuous -60° to 250° F (-51° to 121° C)
- Easy integration with process equipment
- Won't bend, dent or deflect under heavy loads
- Smooth, non-porous surface is easy to clean
- Heavy-duty dolly available

## MFG Gel Cap Drying Trays

*Additional sizes available. If you do not see the size you need, please call. A friendly team member is standing by!*

Model No.	Description	Top Outside Dimensions (L x W x H)					
		inches	mm	inches	mm	inches	mm
60008	Tray with drop ends	29.87	759	23.87	606	1.44	37
600108	Tray with drop sides	29.87	759	23.87	606	1.44	37
600208	Tray with drop sides	14.92	379	23.87	606	1.44	37
600308	Tray with drop ends	29.87	759	23.87	606	2.06	52
600408	Tray with drop ends	29.87	759	23.87	606	1.05	27
642008	Tray with drop ends and drop sides	30.12	765	24.00	610	1.37	35
643008	Tray with drop sides	32.81	833	18.81	478	1.55	39

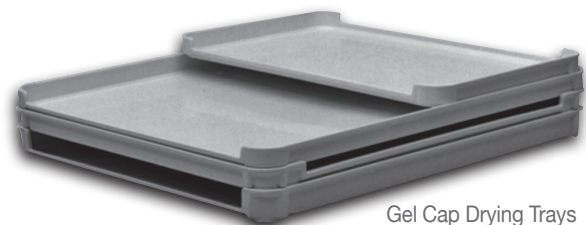
### Standard Colors



White

Gray

*\*Additional colors available upon request*



Gel Cap Drying Trays  
Model No. 600 Stack



Gel Cap Drying Tray  
Model No. 642008



**MOLDED FIBER GLASS TRAY**  
6175 Route 6 · Linesville, PA 16424 USA

PH 814 683.4500 or 800 458.6050  
FX 814 683.4504 [www.mfgtray.com](http://www.mfgtray.com)

MFGTPHgcdt05/18

